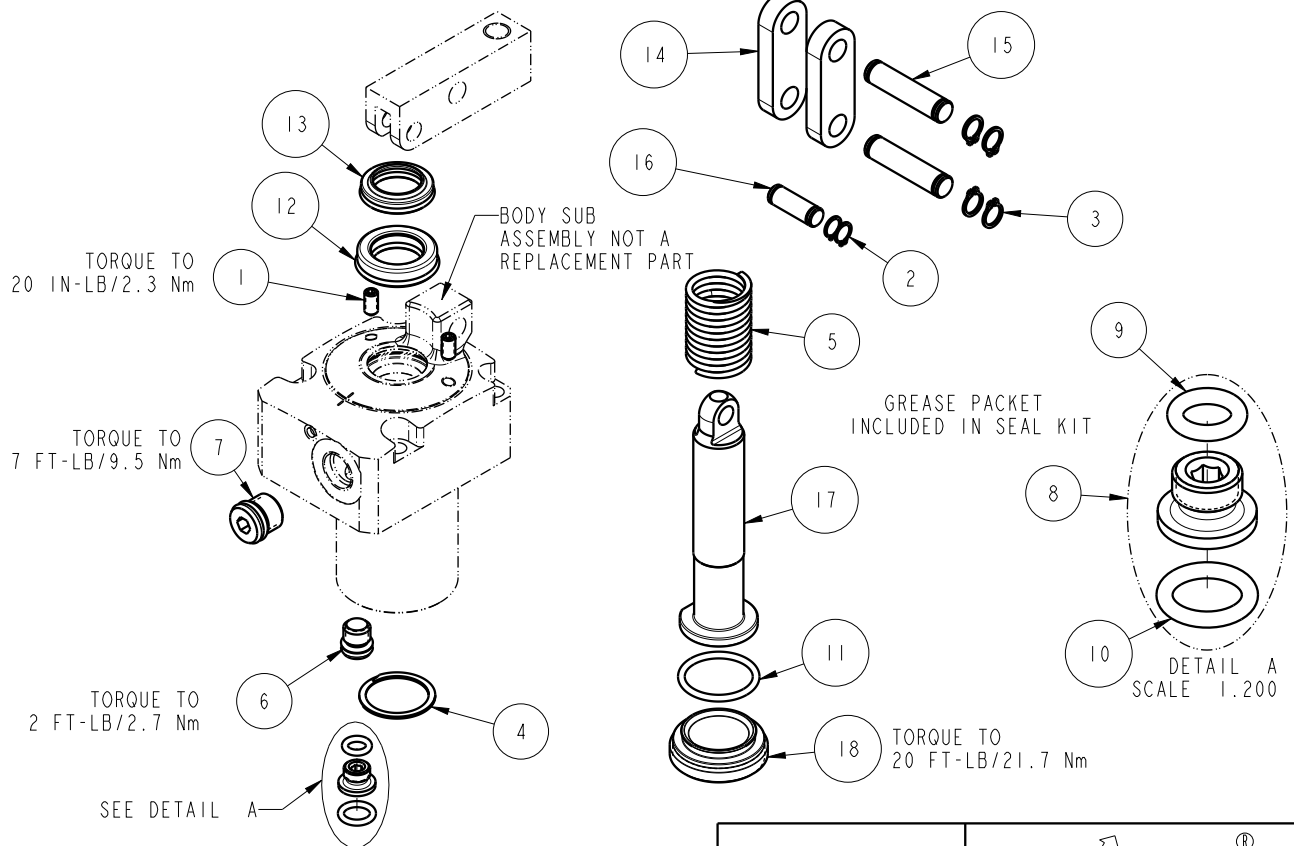


NO	QTY	PART NO	DESCRIPTION	STD SEAL KIT
1	2	21500317	SCREW, SET, CUP PT, M4 X .7 X 8	
2	2	23050032	RING, RTNG, EXT, 0.236	X
3	4	23050033	RING, RTNG, EXT, 0.276	X
4	1	23050053	RETAINING RING, SPIRAL, INTL	X
5	1	23350129	SPRING, COMPRESSION	
6	1	30601122	PLUG, SOCH, SAE 2	
7	1	30601144	PLUG, SOCH, SAE 4	
8	1	30871120	ASSY, ADAPTER, SC, TF, MM	X
9	1	39050036	O-RING, (-009)	X*
10	1	39050042	O-RING, (-011)	X*
11	1	39051149	O-RING, (20mm X 2)	X
12	1	39052065	SEAL, ROD, RSB, 15, 85A, AU	X
13	1	39053041	SEAL, WIPER, SNAP IN, WED, 15, 94A, AU	X
14	2	81600146	LINK, LC, 7MP α , 32B	
15	2	81600151	PIN, LINK, LC, 7MP α , 32B	
16	1	81600156	PIN, PLUNGER, LC, 7MP α , 32B	
17	1	81600261	PLUNGER, LC, TL360, SA, 1000/4.36kN	
18	1	81600271	CAP, LC, TL360, 1000/4.36kN	
N/A	N/A	60160101	KIT, SEAL, ASSY, LC, TL360, SA, 10001b	NOTED

*NOTE: ITEMS INCLUDED IN NO.8



PARTS LIST



VEKTEK, INC.
1334 E. SIXTH AVE. P.O. BOX 625
EMPORIA, KS. 66801 U.S.A.

ASSEMBLIES AFFECTED
16-3115-00

PARTS LIST, ASSY, LC, TL360, SA, 10001b

ROTARY LUG

SIZE A
PL1615

REV C

C	5089	RELEASE	ALS	5/2/23
REV	IN ACCORDANCE WITH ECN	EFFECTIVE DATE	REVISED BY	DATE
DRW BY:	BCD	DRAWING STATUS: Released		
DATE:	07/20/16	PRODUCTION APPROVED FOR RELEASED STATUS ONLY		